

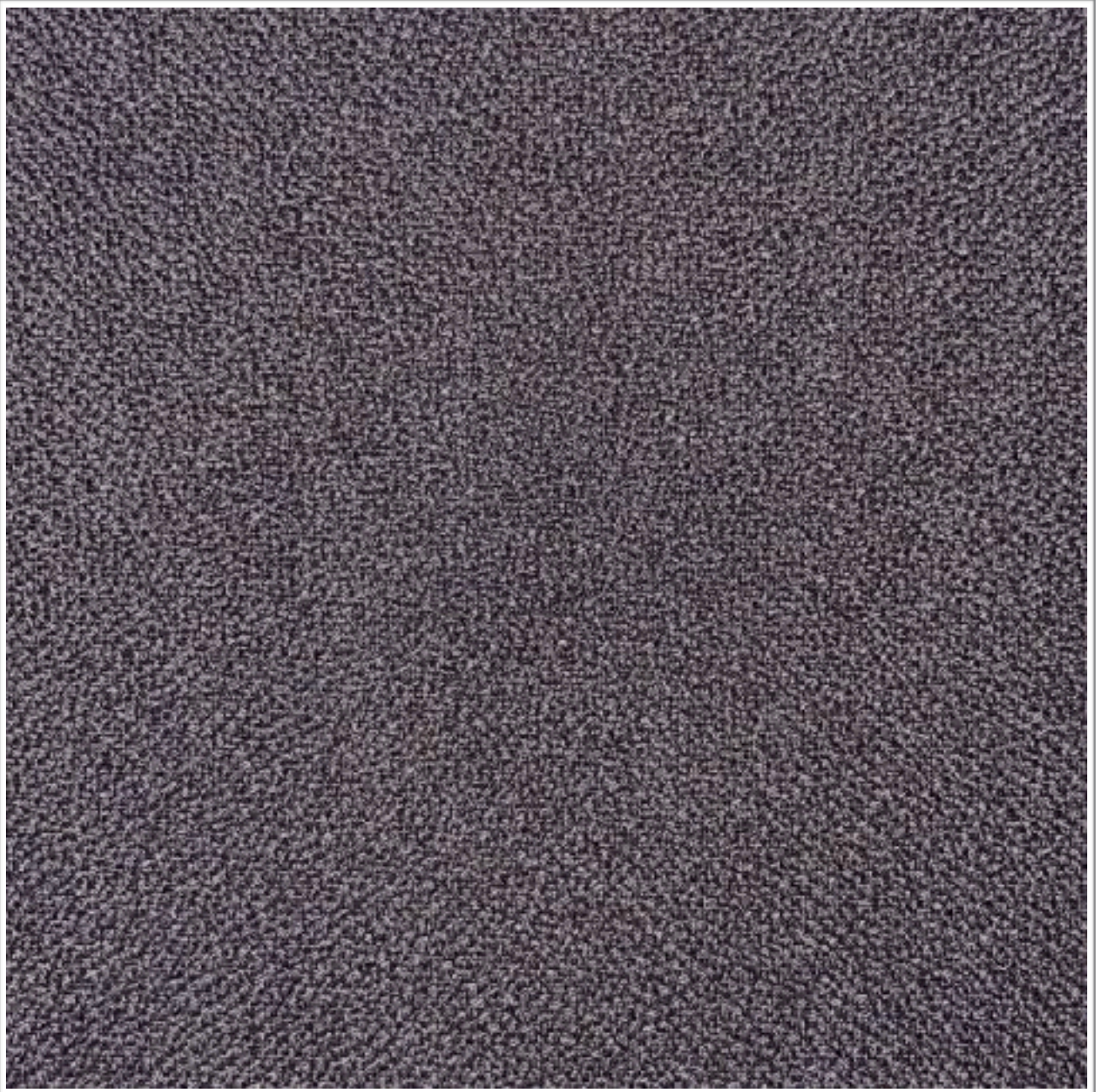
# **VULCAN**

## **MISTRAL**

---

# **Weavers**

## **World**



Photographic fabric scans are not colour accurate. Always request actual fabric samples before ordering.

## SPECIFICATIONS

<b>Application</b>	<b>Contract Upholstery &amp; Screening</b>
<b>Composition:</b>	<b>100% Acrylic</b>
<b>Width</b>	<b>140cm</b>
<b>Mass</b>	<b>464gm/m<sup>2</sup></b>
<b>Complies To</b>	<b>SABS 1324 Contract Specification</b>

---

		<b>STANDARD</b>	<b>VULCAN</b>
<b>Abrasion Resistance:</b>		<b>25 000 Rubs</b>	<b>+30 000 Rubs</b>
<b>Colour Fastness:</b>			
<b>To Light</b>		<b>6</b>	<b>+7</b>
<b>To Rubbing</b>		<b>4</b>	<b>5</b>
<b>To Dry Cleaning</b>		<b>4</b>	<b>5</b>
<b>To Perspiration</b>		<b>4</b>	<b>4-5</b>
<b>To Pilling</b>		<b>4</b>	<b>4-5</b>
<b>Seam Slippage:</b>	<b>Warp</b>	<b>180N</b>	<b>310N</b>
	<b>Weft</b>	<b>180N</b>	<b>390N</b>
<b>Tensile Strength:</b>	<b>Warp</b>	<b>400N</b>	<b>920N</b>
	<b>Weft</b>	<b>400N</b>	<b>740N</b>
<b>Cleaning Instructions</b>		<b>Professional Cleaning</b>	

**NOTE: Refer to SABS 726 - This specification calls for a minimum seam of 15mm and 4-5 stitches per cm.**