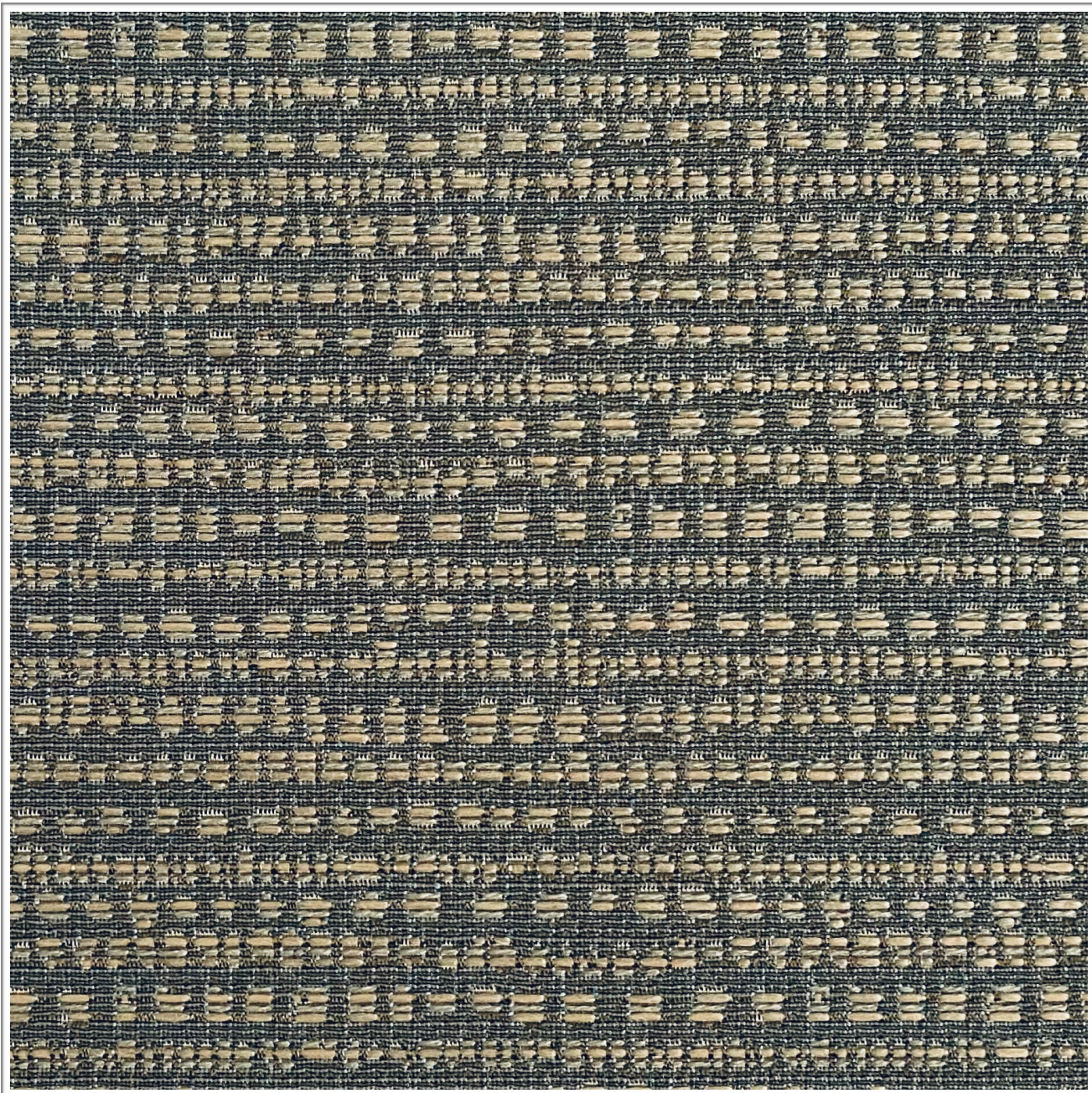


# **ARCHITEX**

**GRAVES / RICE**

---

**Weavers**  
**World**



Photographic fabric scans are not colour accurate. Always request actual fabric samples before ordering.

## SPECIFICATIONS

<b>Composition</b>	<b>77% Polyester, 23% Olefin</b>
<b>Width</b>	<b>148cm</b>
<b>Mass</b>	<b>562gm/1m</b>
<b>Pattern Repeat</b>	<b>9 x 6cm</b>
<b>Complies To</b>	<b>SABS 1324 Contract Specification</b>

---

		<b>STANDARD</b>	<b>GRAVES</b>
<b>Abrasion Resistance:</b>		<b>25 000 Rubs</b>	<b>+25 000 Rubs</b>
<b>Colour Fastness:</b>			
<b>To Light</b>		<b>6</b>	<b>6</b>
<b>To Rubbing</b>		<b>4</b>	<b>4</b>
<b>Seam Slippage:</b>	<b>Warp</b>	<b>180N</b>	<b>+180N</b>
	<b>Weft</b>	<b>180N</b>	<b>+180N</b>
<b>Tensile Strength:</b>	<b>Warp</b>	<b>400N</b>	<b>+400N</b>
	<b>Weft</b>	<b>400N</b>	<b>+400N</b>
<b>Dry Cleaning:</b>		<b>Cold Dry Cleaning</b>	
<b>Cleaning:</b>		<b>Professional Cleaning</b>	

**NOTE: Refer to SABS 726 - This specification calls for a minimum seam of 15mm and 4-5 stitches per cm.**