

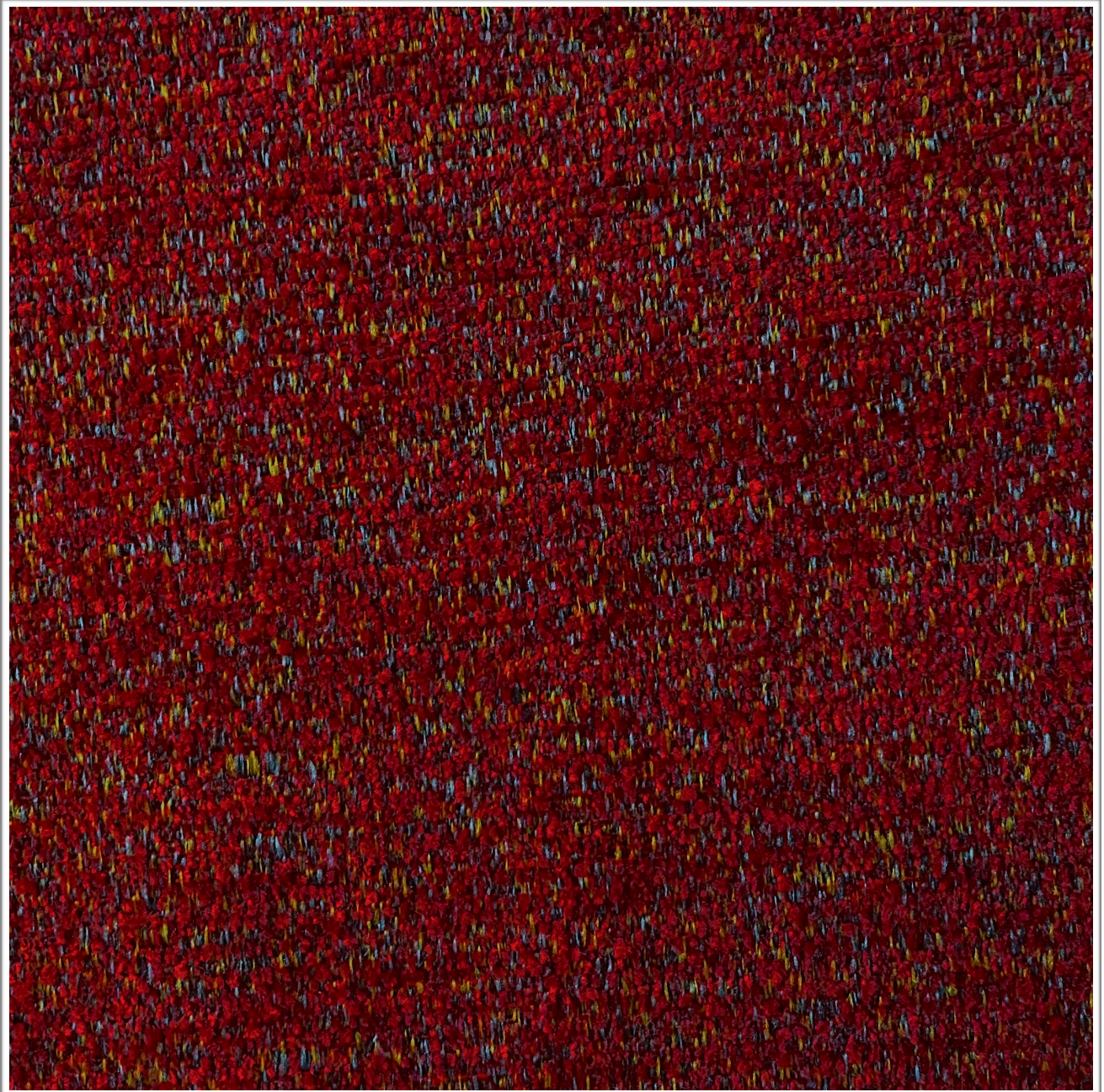
# **GRAFFITI**

## **DAHLIA**

---

# **Weavers**

## **World**



Photographic fabric scans are not colour accurate. Always request actual fabric samples before ordering.

## SPECIFICATIONS

<b>Application</b>	<b>Upholstery &amp; Panels</b>
<b>Composition</b>	<b>100% Polyester</b>
<b>Width</b>	<b>142cm</b>
<b>Mass</b>	<b>480gm/1m</b>
<b>Pattern Repeat</b>	<b>Plain</b>
<b>Complies to</b>	<b>SABS 1324 Contract Specification</b>

---

		<b>STANDARD</b>	<b>GRAFFITI</b>
<b>Abrasion Resistance:</b>		<b>25 000</b>	<b>+30 000</b>
<b>Colour Fastness:</b>			
<b>To Light</b>		<b>6</b>	<b>4</b>
<b>To Rubbing</b>		<b>4</b>	<b>4-5</b>
<b>Pilling</b>		<b>4</b>	<b>4-5</b>
<b>Seam Slippage:</b>	<b>Warp</b>	<b>180N</b>	<b>+180N</b>
	<b>Weft</b>	<b>180N</b>	<b>+180N</b>
<b>Tensile Strength:</b>	<b>Warp</b>	<b>400N</b>	<b>1200N</b>
	<b>Weft</b>	<b>400N</b>	<b>420N</b>
<b>Cleaning Instructions:</b>		<b>Professional Cleaning</b>	

**NOTE: Refer to SABS 726 - This specification calls for a minimum seam of 15mm and 4-5 stitches per cm.**