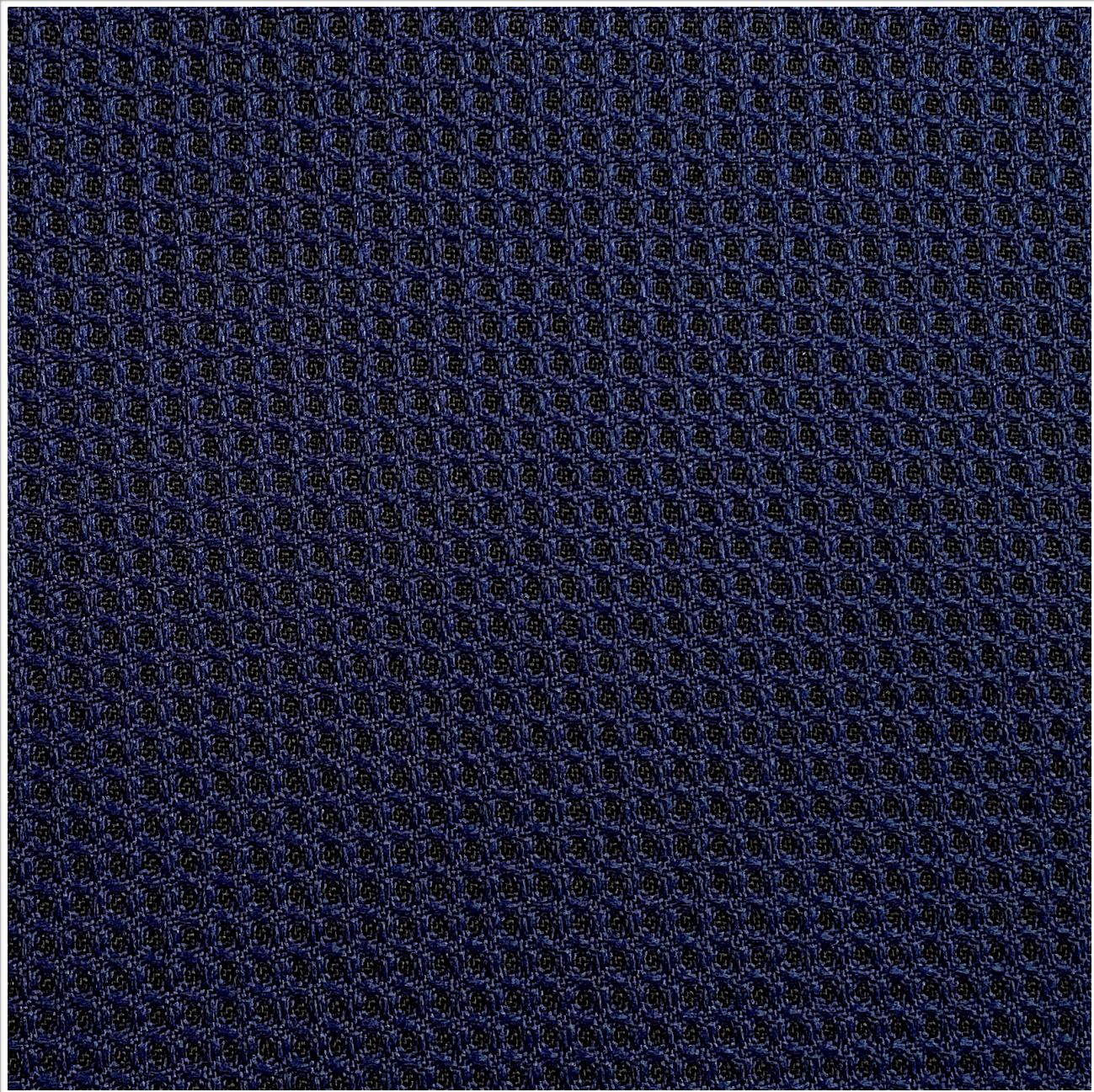


HONEYCOMB

LAGUNA

Weavers
World



Photographic fabric scans are not colour accurate. Always request actual fabric samples before ordering.

SPECIFICATIONS

| | |
|-----------------------|---|
| Application | Contract Upholstery |
| Composition | 100% Polyester |
| Width | 135cm |
| Mass | 300gm/1m |
| Pattern Repeat | Plain |
| Complies to | SABS 1324 Contract Specification |

| | | STANDARD | HONEYCOMB |
|-------------------------------|-------------|------------------------------|------------------|
| Abrasion Resistance: | | 25 000 | +25 000 |
| Colour Fastness: | | 6 | 7 |
| To Light | | 4 | 5 |
| To Rubbing | | 4 | 5 |
| To Dry Cleaning | | 4 | 4 |
| To Perspiration | | 4 | 4 |
| To Pilling | | 4 | 4-5 |
| Seam Slippage: | Warp | 180N | 180N |
| | Weft | 180N | 180N |
| Tensile Strength: | Warp | 400N | 500N |
| | Weft | 400N | 500N |
| Cleaning Instructions: | | Professional Cleaning | |

NOTE: Refer to SABS 726 - This specification calls for a minimum seam of 15mm and 4-5 stitches per cm.