

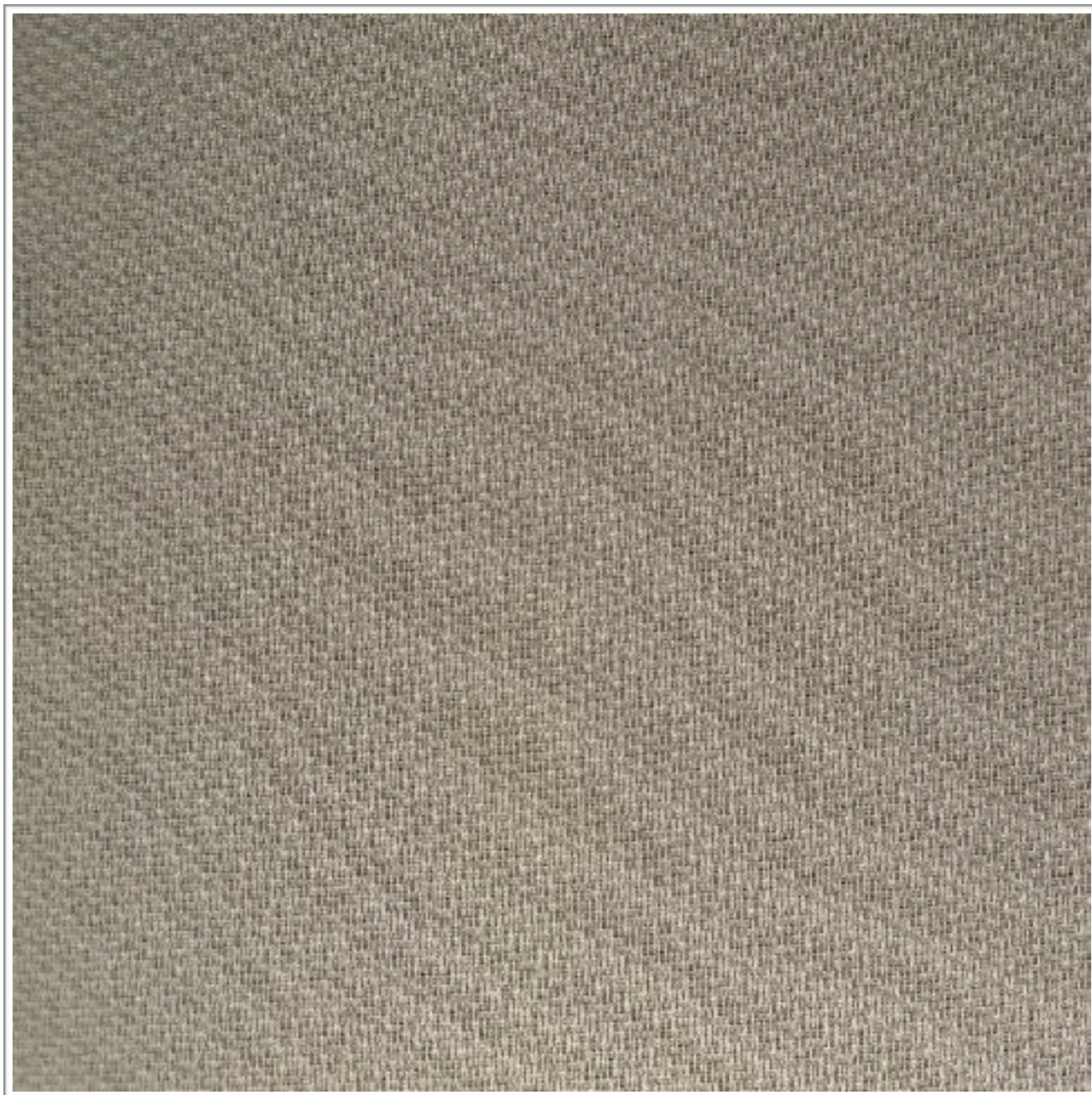
# **PLATINUM**

## **BONE**

---

# **Weavers**

## **World**



Photographic fabric scans are not colour accurate. Always request actual fabric samples before ordering.

## SPECIFICATIONS

|                       |  |
|-----------------------|--|
| <b>Application</b>    | <b>Screening</b>   |
| <b>Composition</b>    | <b>46% Acrylic, 39% Recycled Polyester, 15% Polyprop</b> |
| <b>Width</b>          | <b>148cm</b>   |
| <b>Mass</b>           | <b>276gm/1m</b>  |
| <b>Pattern Repeat</b> | <b>Plain</b>   |
| <b>Complies To</b>    | <b>SABS 1324 Office Partitions Specification</b>         |

---

|                               |             | <b>STANDARD</b>              | <b>PLATINUM</b> |
|-------------------------------|-------------|------------------------------|-----------------|
| <b>Colour Fastness:</b>       |             |                              |                 |
| <b>To Light</b>               |             | <b>6</b>                     | <b>6</b>        |
| <b>To Rubbing</b>             |             | <b>4</b>                     | <b>4</b>        |
| <b>Seam Slippage:</b>         | <b>Warp</b> | <b>180N</b>                  | <b>+180N</b>    |
|                               | <b>Weft</b> | <b>180N</b>                  | <b>+180N</b>    |
| <b>Tensile Strength:</b>      | <b>Warp</b> | <b>400N</b>                  | <b>+400N</b>    |
|                               | <b>Weft</b> | <b>400N</b>                  | <b>+400N</b>    |
| <b>Cleaning Instructions:</b> |             | <b>Professional Cleaning</b> |                 |

**NOTE: Refer to SABS 726 - This specification calls for a minimum seam of 15mm and 4-5 stitches per cm.**