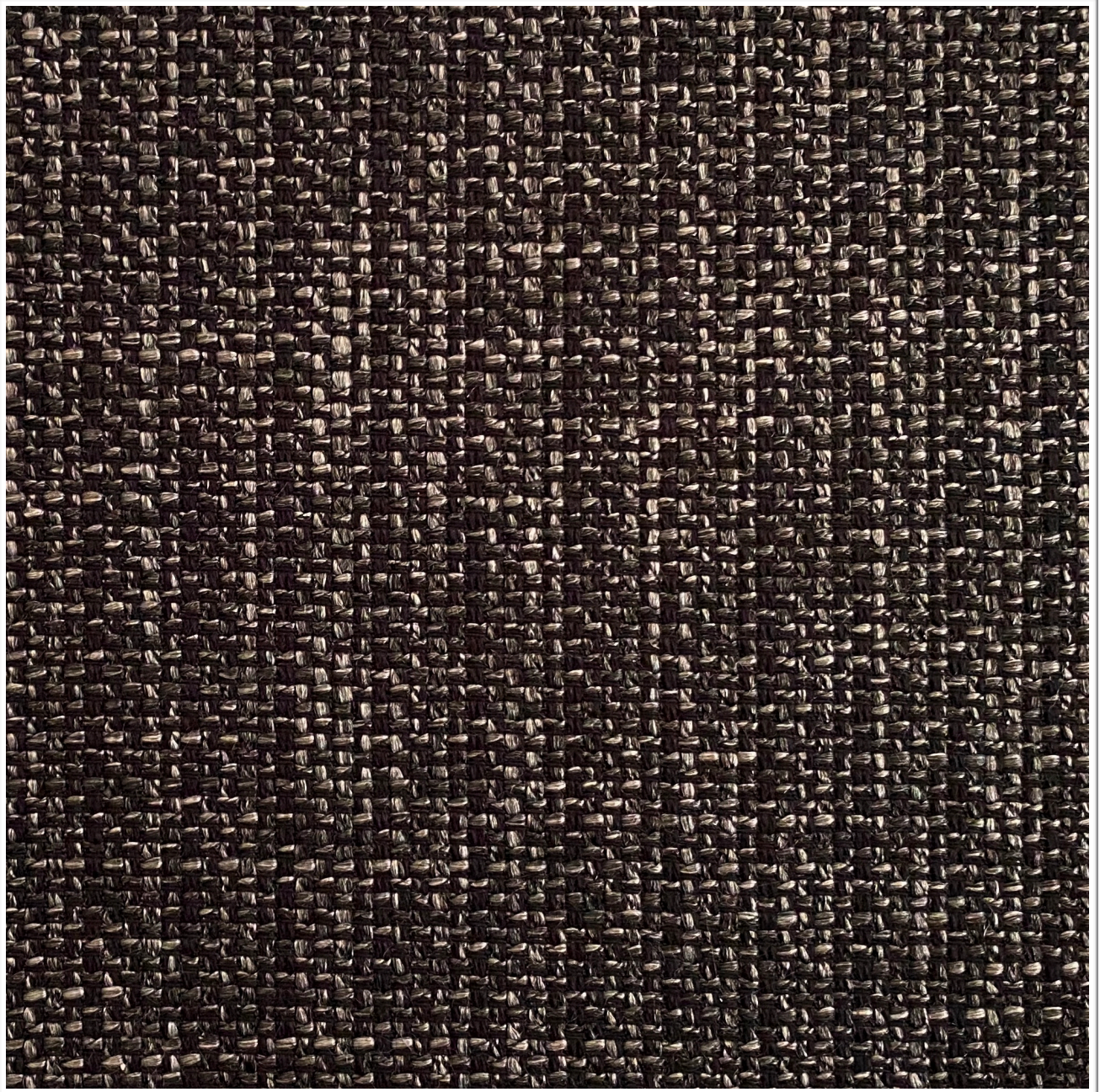


# **ARCHITEX**

**BAN / NOMADIC**

---

**Weavers**  
**World**



Photographic fabric scans are not colour accurate. Always request actual fabric samples before ordering.

## SPECIFICATIONS

|                       |   |
|-----------------------|---|
| <b>Composition</b>    | <b>53% Acrylic, 33% Polyester, 14% Cotton</b> |
| <b>Width</b>          | <b>136cm</b>                                  |
| <b>Mass</b>           | <b>508gm/1m</b>                               |
| <b>Pattern Repeat</b> | <b>None</b>                                   |
| <b>Complies To</b>    | <b>SABS 1324 Contract Specification</b>       |

---

|                             |             | <b>STANDARD</b>              | <b>BAN</b>          |
|-----------------------------|-------------|------------------------------|---------------------|
| <b>Abrasion Resistance:</b> |             | <b>25 000 Rubs</b>           | <b>+50 000 Rubs</b> |
| <b>Colour Fastness:</b>     |             |                              |                     |
| <b>To Light</b>             |             | <b>5</b>                     | <b>5</b>            |
| <b>To Rubbing</b>           |             | <b>4</b>                     | <b>4</b>            |
| <b>Seam Slippage:</b>       | <b>Warp</b> | <b>180N</b>                  | <b>+180N</b>        |
|                             | <b>Weft</b> | <b>180N</b>                  | <b>+180N</b>        |
| <b>Tensile Strength:</b>    | <b>Warp</b> | <b>400N</b>                  | <b>+400N</b>        |
|                             | <b>Weft</b> | <b>400N</b>                  | <b>+400N</b>        |
| <b>Dry Cleaning:</b>        |             | <b>Cold Dry Cleaning</b>     |                     |
| <b>Cleaning:</b>            |             | <b>Professional Cleaning</b> |                     |

**NOTE: Refer to SABS 726 - This specification calls for a minimum seam of 15mm and 4-5 stitches per cm.**