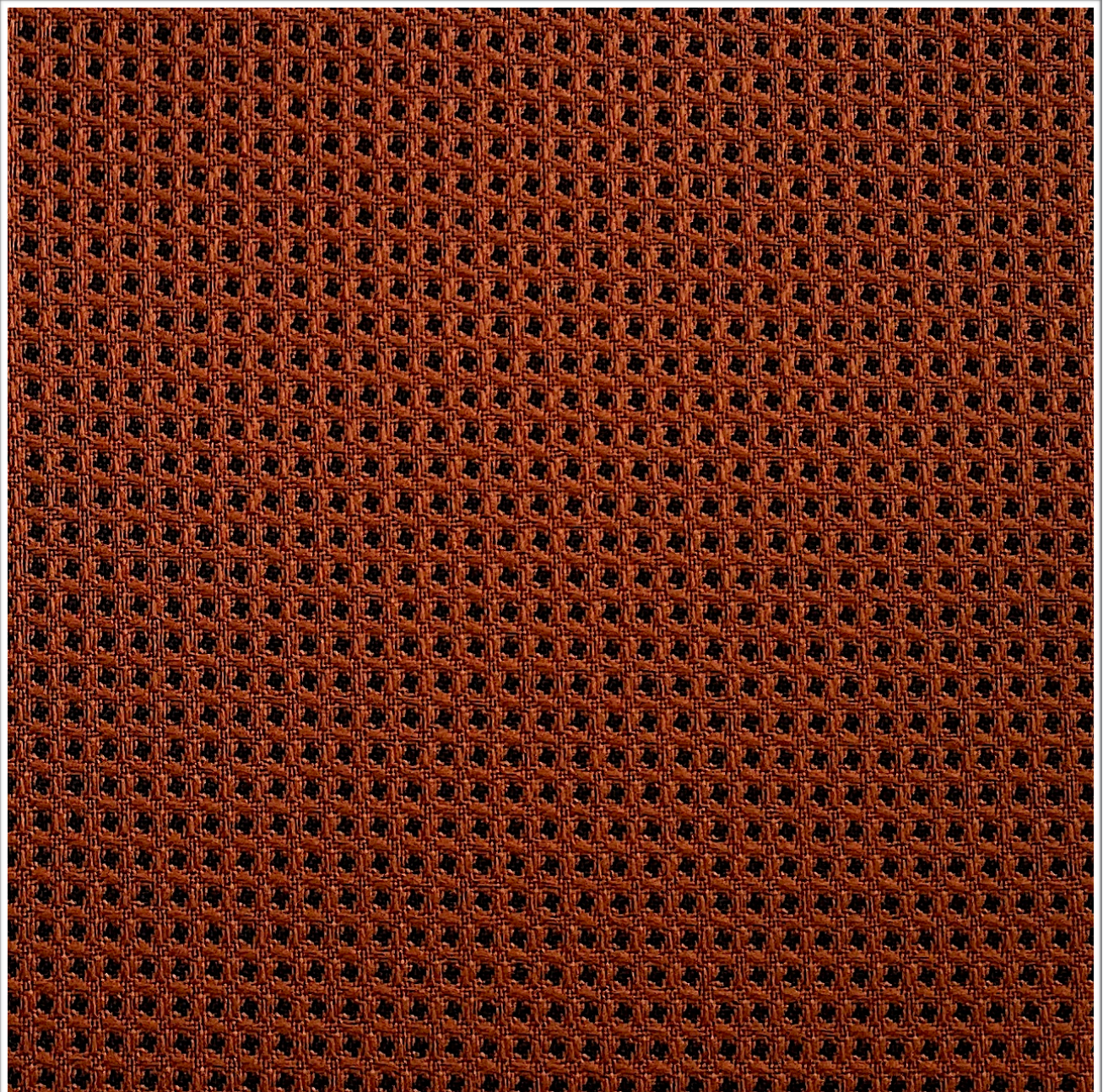


HONEYCOMB

SATSSU

Weavers
World



Photographic fabric scans are not colour accurate. Always request actual fabric samples before ordering.

SPECIFICATIONS

Application	Contract Upholstery
Composition	100% Polyester
Width	135cm
Mass	300gm/1m
Pattern Repeat	Plain
Complies to	SABS 1324 Contract Specification

		STANDARD	HONEYCOMB
Abrasion Resistance:		25 000	+25 000
Colour Fastness:		6	7
To Light		4	5
To Rubbing		4	5
To Dry Cleaning		4	4
To Perspiration		4	4
To Pilling		4	4-5
Seam Slippage:	Warp	180N	180N
	Weft	180N	180N
Tensile Strength:	Warp	400N	500N
	Weft	400N	500N
Cleaning Instructions:		Professional Cleaning	

NOTE: Refer to SABS 726 - This specification calls for a minimum seam of 15mm and 4-5 stitches per cm.