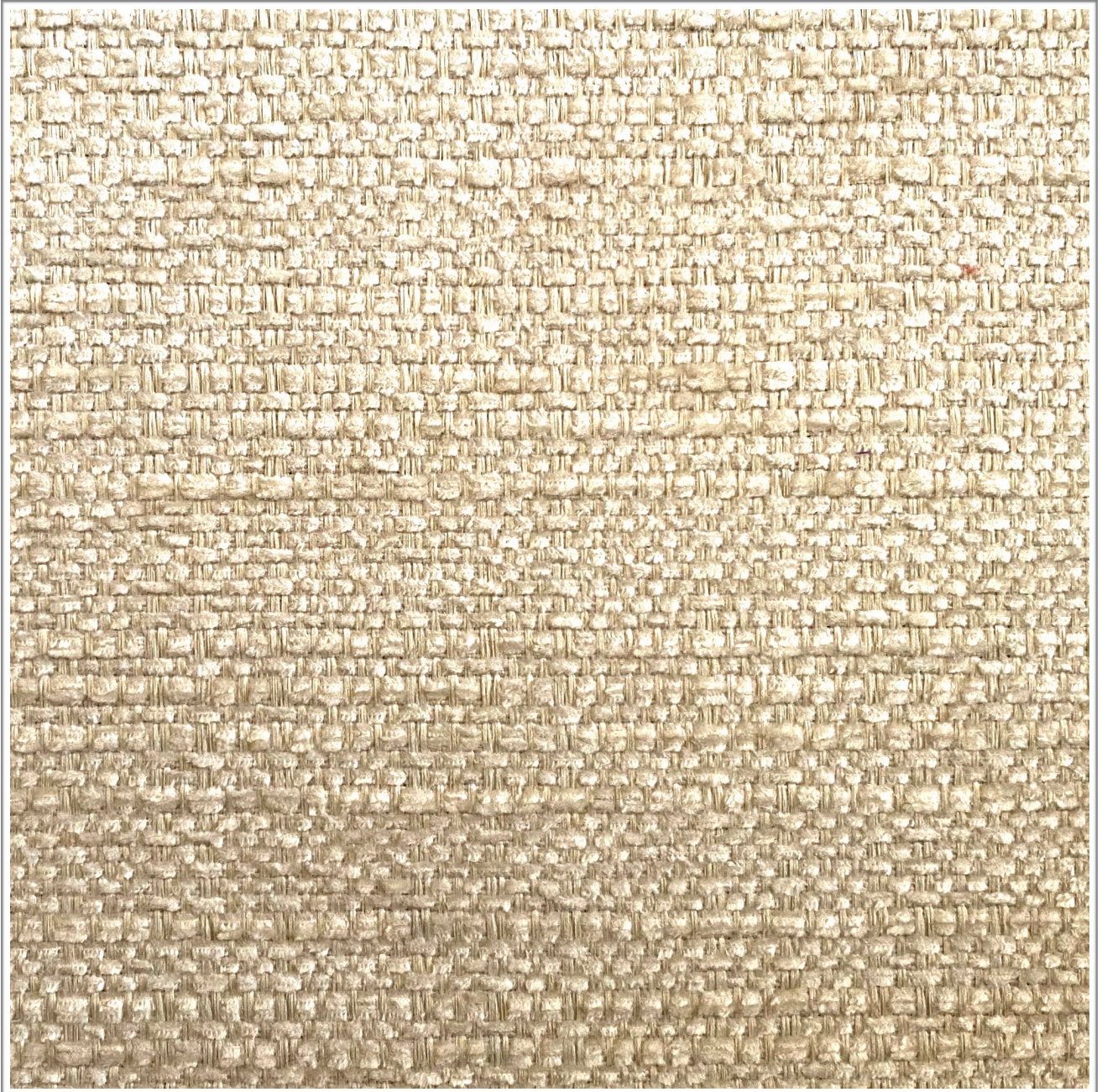


ARCHITEX
CORCU / HAND

Weavers
World



Photographic fabric scans are not colour accurate. Always request actual fabric samples before ordering.

SPECIFICATIONS

| | |
|-----------------------|---|
| Composition | 45% Polyester, 40% Acrylic, 15% Cotton |
| Width | 140cm |
| Mass | 475gm/1m |
| Pattern Repeat | None |
| Complies To | SABS 1324 Contract Specification |

| | | STANDARD | CORBU |
|-----------------------------|-------------|------------------------------|---------------------|
| Abrasion Resistance: | | 25 000 Rubs | +25 000 Rubs |
| Colour Fastness: | | | |
| To Light | | 6 | 6 |
| To Rubbing | | 4 | 4 |
| Seam Slippage: | Warp | 180N | +180N |
| | Weft | 180N | +180N |
| Tensile Strength: | Warp | 400N | +400N |
| | Weft | 400N | +400N |
| Dry Cleaning: | | Cold Dry Cleaning | |
| Cleaning: | | Professional Cleaning | |

NOTE: Refer to SABS 726 - This specification calls for a minimum seam of 15mm and 4-5 stitches per cm.