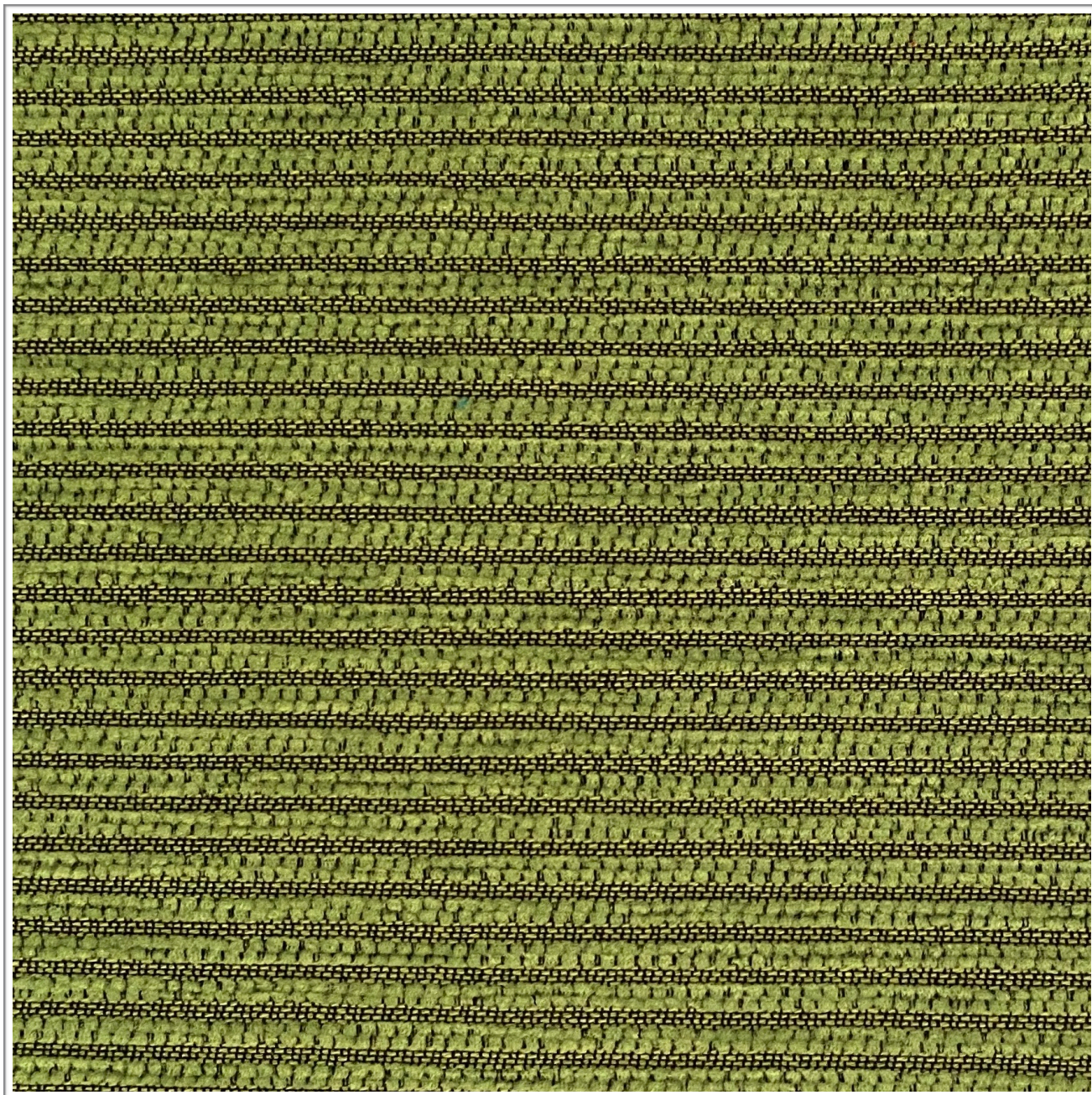


ALIGN
KIWI

Weavers
World



Photographic fabric scans are not colour accurate. Always request actual fabric samples before ordering.

SPECIFICATIONS

| | PLAIN | STRIPE |
|----------------|----------------------------------|---------------------|
| Application | Upholstery | Upholstery |
| Composition | 66% Poly, 34% Acryl | 84% Poly, 16% Acryl |
| Width | 148cm | 148cm |
| Mass | 406gm/1m | 365gm/1m |
| Pattern Repeat | Plain | Railroaded x 20cm |
| Complies To | SABS 1324 Contract Specification | |

| | | PLAIN | STRIPE | STANDARD |
|------------------------|------|-----------------------|--------------|-------------|
| Abrasion Resistance: | | +25 000 Rubs | +25 000 Rubs | 25 000 Rubs |
| Colour Fastness: | | | | |
| To Light | | 5-6 | 5-6 | 6 |
| To Rubbing | | 4 | 4 | 4 |
| Seam Slippage: | Warp | +180N | +180N | 180N |
| | Weft | +180N | +180N | 180N |
| Tensile Strength: | Warp | +400N | +400N | 400N |
| | Weft | +400N | +400N | 400N |
| Cleaning Instructions: | | Professional Cleaning | | |

NOTE: Refer to SABS 726 - This specification calls for a minimum seam of 15mm and 4-5 stitches per cm.