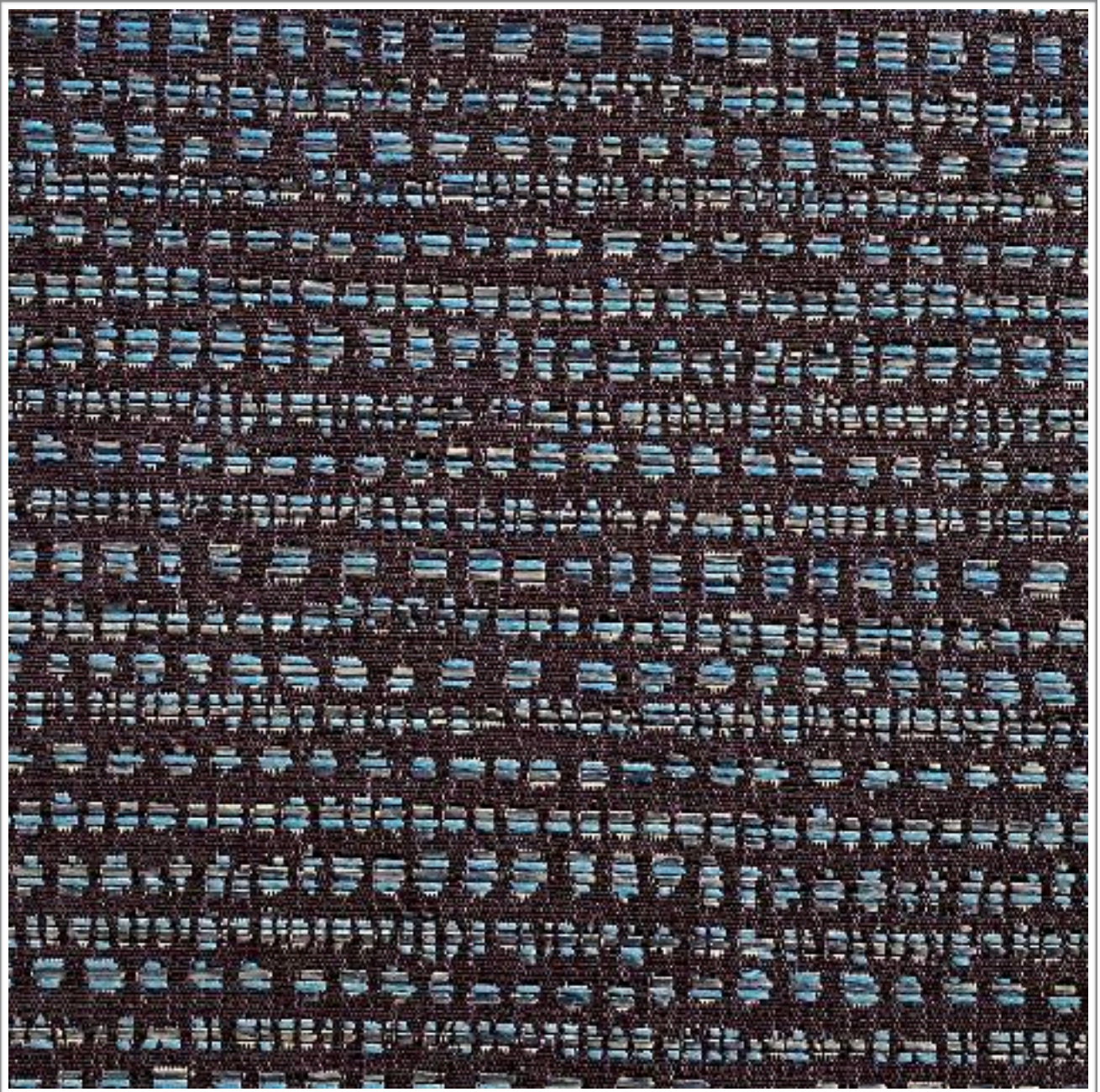


ARCHITEX
GRAVES / ALESSI

Weavers
World



Photographic fabric scans are not colour accurate. Always request actual fabric samples before ordering.

SPECIFICATIONS

Composition	77% Polyester, 23% Olefin
Width	148cm
Mass	562gm/1m
Pattern Repeat	9 x 6cm
Complies To	SABS 1324 Contract Specification

		STANDARD	GRAVES
Abrasion Resistance:		25 000 Rubs	+25 000 Rubs
Colour Fastness:			
To Light		6	6
To Rubbing		4	4
Seam Slippage:	Warp	180N	+180N
	Weft	180N	+180N
Tensile Strength:	Warp	400N	+400N
	Weft	400N	+400N
Dry Cleaning:		Cold Dry Cleaning	
Cleaning:		Professional Cleaning	

NOTE: Refer to SABS 726 - This specification calls for a minimum seam of 15mm and 4-5 stitches per cm.