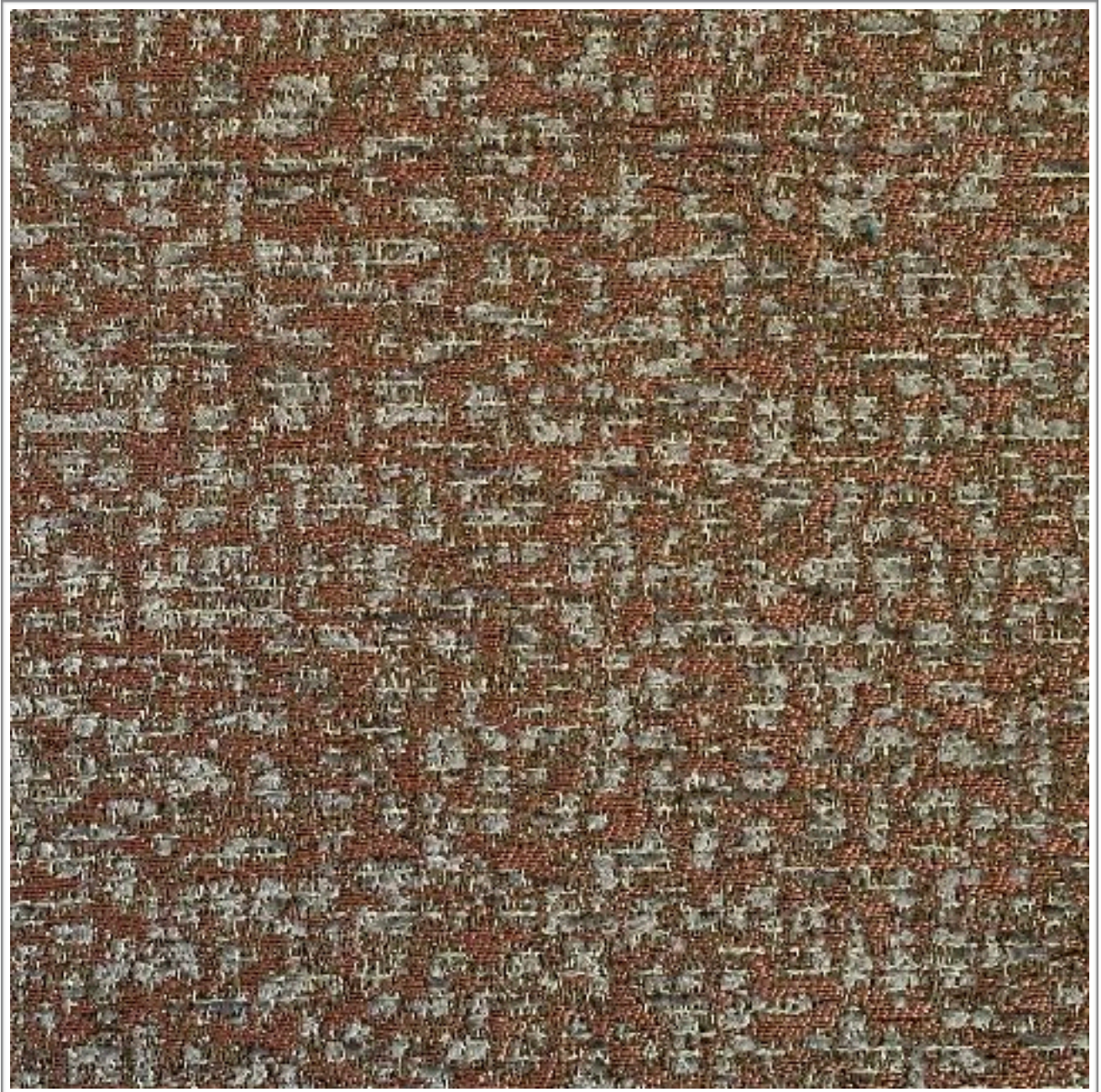


ARCHITEX

**SANTIAGO /
MILWAUKEE**

**Weavers
World**



Photographic fabric scans are not colour accurate. Always request actual fabric samples before ordering.

SPECIFICATIONS

Composition	100% Polyester
Width	148cm
Mass	577gm/1m
Pattern Repeat	36,5 x 33,5cm
Complies To	SABS 1324 Contract Specification

		STANDARD	SANTIAGO
Abrasion Resistance:		25 000 Rubs	+40 000 Rubs
Colour Fastness:			
To Light		6	6
To Rubbing		4	4
Seam Slippage:	Warp	180N	+180N
	Weft	180N	+180N
Tensile Strength:	Warp	400N	+400N
	Weft	400N	+400N
Dry Cleaning:		Cold Dry Cleaning	
Cleaning:		Professional Cleaning	

NOTE: Refer to SABS 726 - This specification calls for a minimum seam of 15mm and 4-5 stitches per cm.